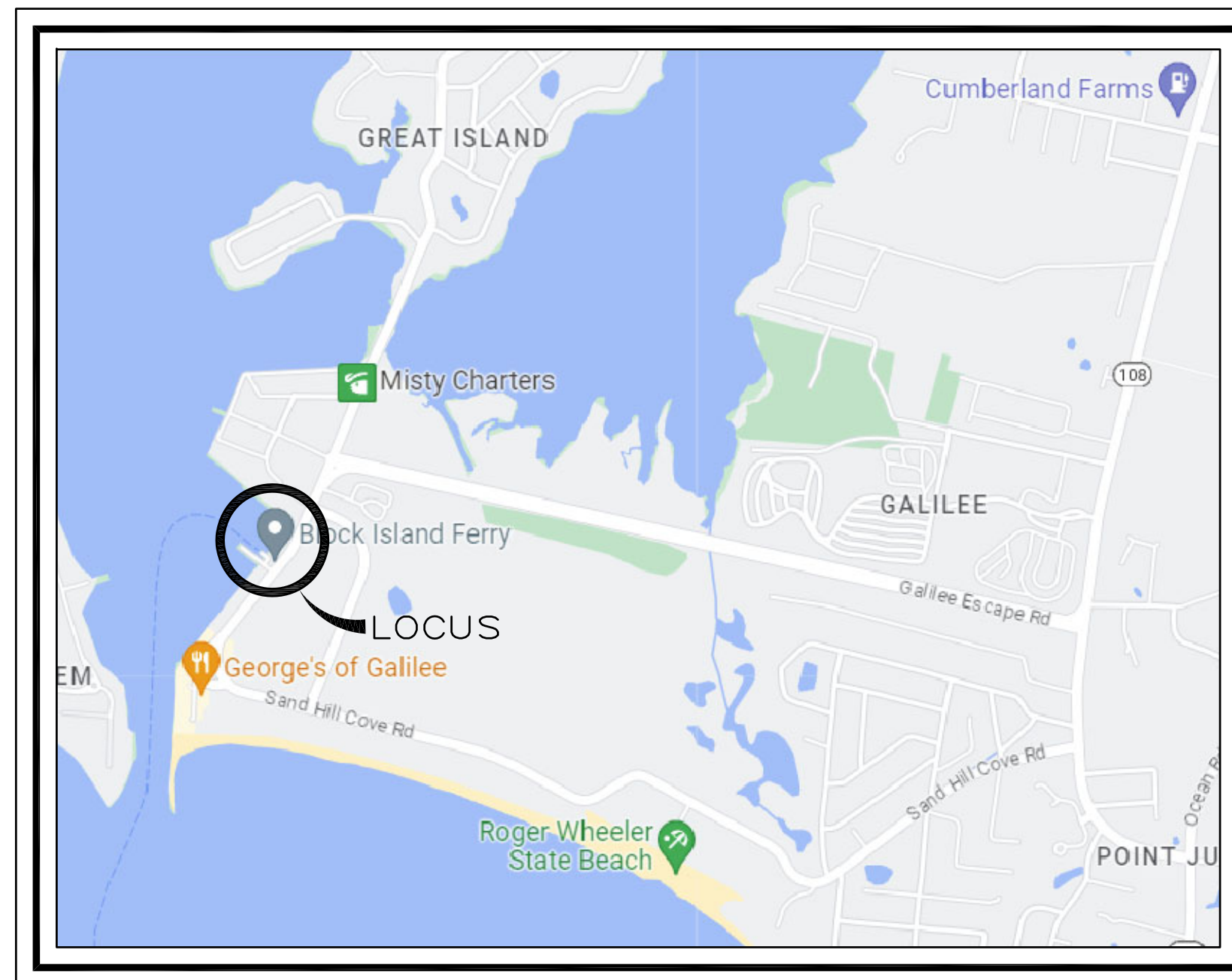


THE BLOCK ISLAND FERRY
INTERSTATE NAVIGATION COMPANY
PLAN OF PROPOSED
LOADING RAMP REPLACEMENT

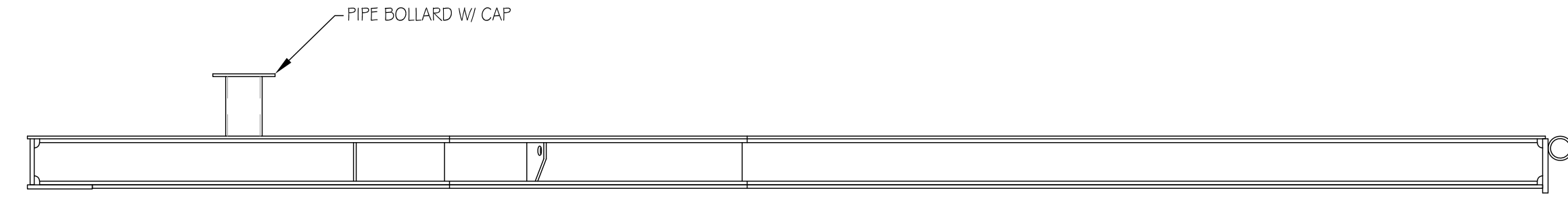
LOCATED
304 GREAT ISLAND RD
NARRAGANSETT, RI 02882
WASHINGTON COUNTY



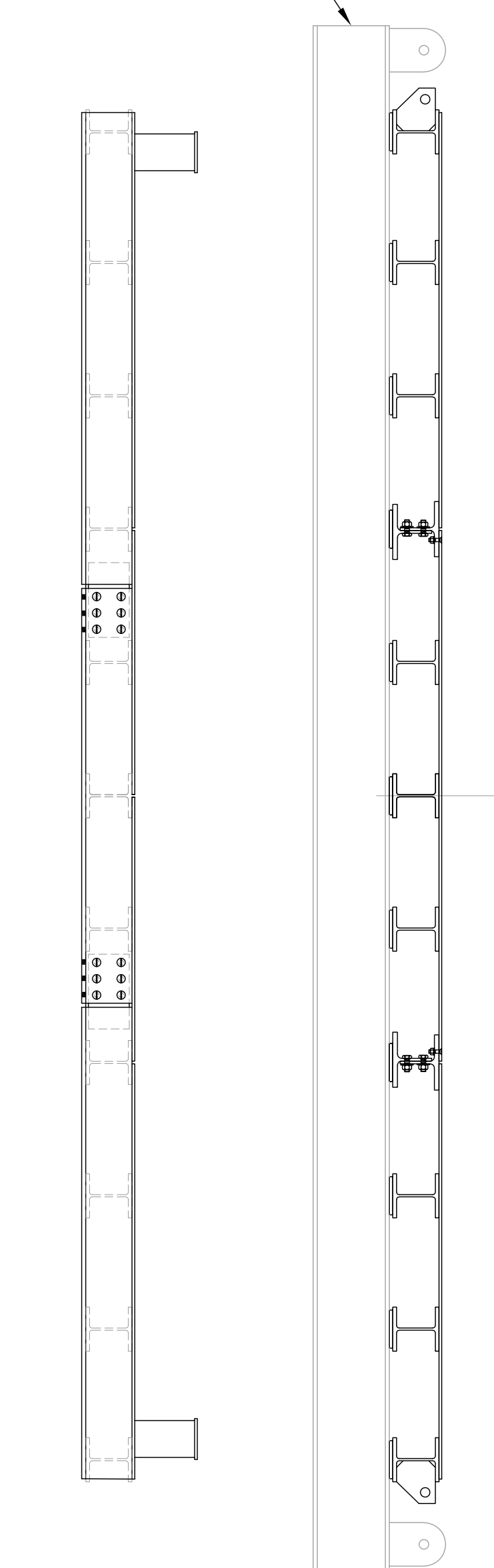
LOCUS
N.T.S.



REUSE EXISTING LIFTING BEAM, SHEAVES AND CABLES - CONTACT ENGINEER DURING FIELD ASSEMBLY OF NEW RAMP FOR CONNECTION OF EXISTING LIFTING BEAM TO NEW LOADING RAMP.

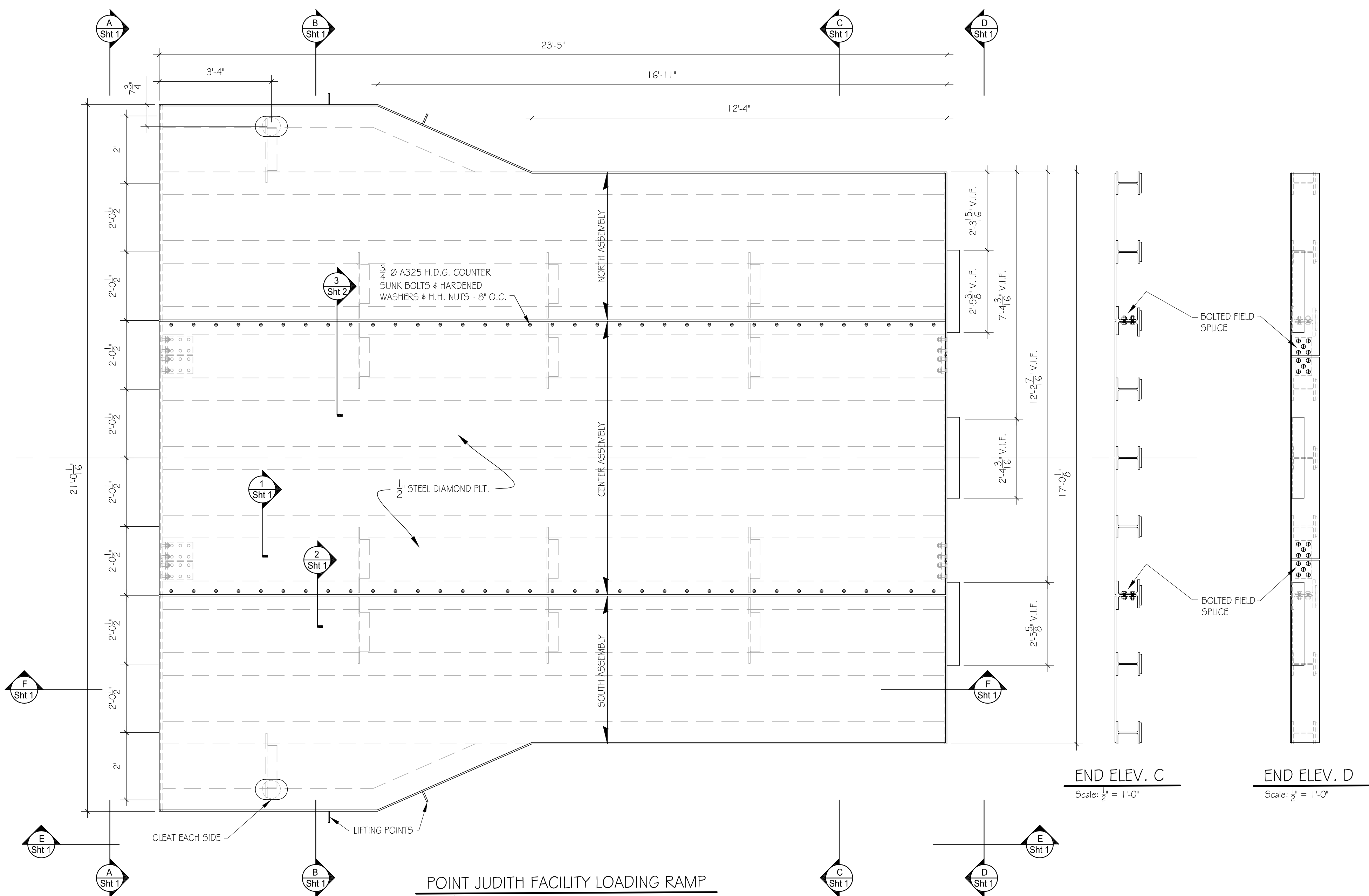


SIDE ELEVATION E
Scale: $\frac{1}{2}'' = 1'-0''$



END ELEV. A
Scale: $\frac{1}{2}'' = 1'-0''$

SECTION B
Scale: $\frac{1}{2}'' = 1'-0''$



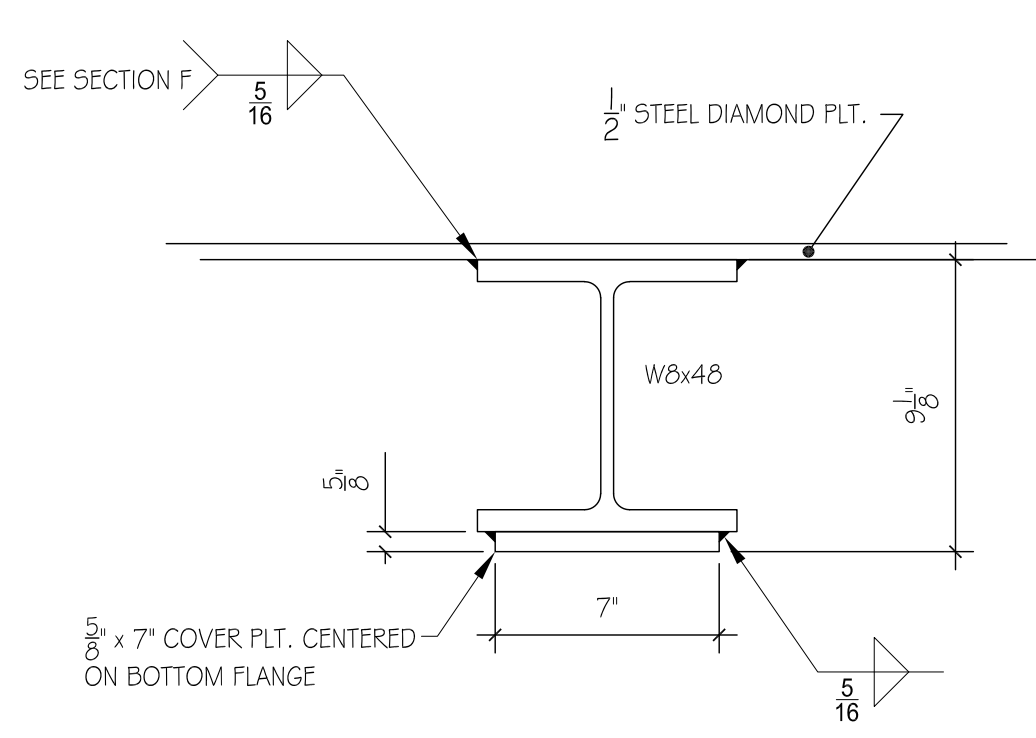
POINT JUDITH FACILITY LOADING RAMP
Scale: $\frac{1}{2}'' = 1'-0''$

END ELEV. C
Scale: $\frac{1}{2}'' = 1'-0''$

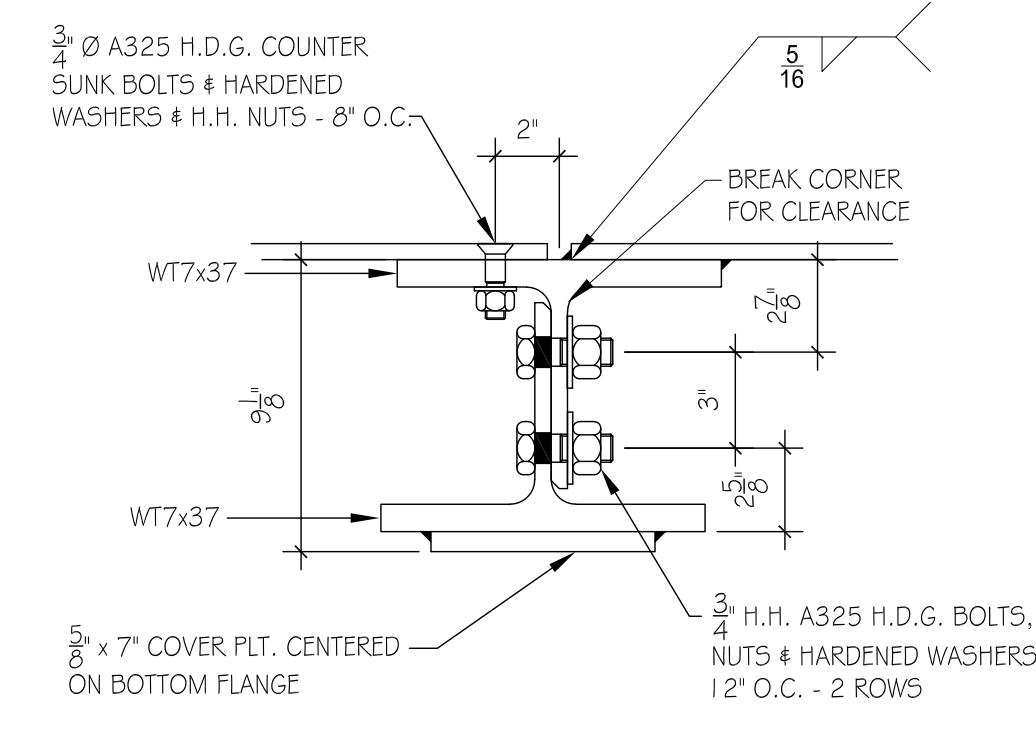
END ELEV. D
Scale: $\frac{1}{2}'' = 1'-0''$

STRUCTURAL STEEL NOTES:

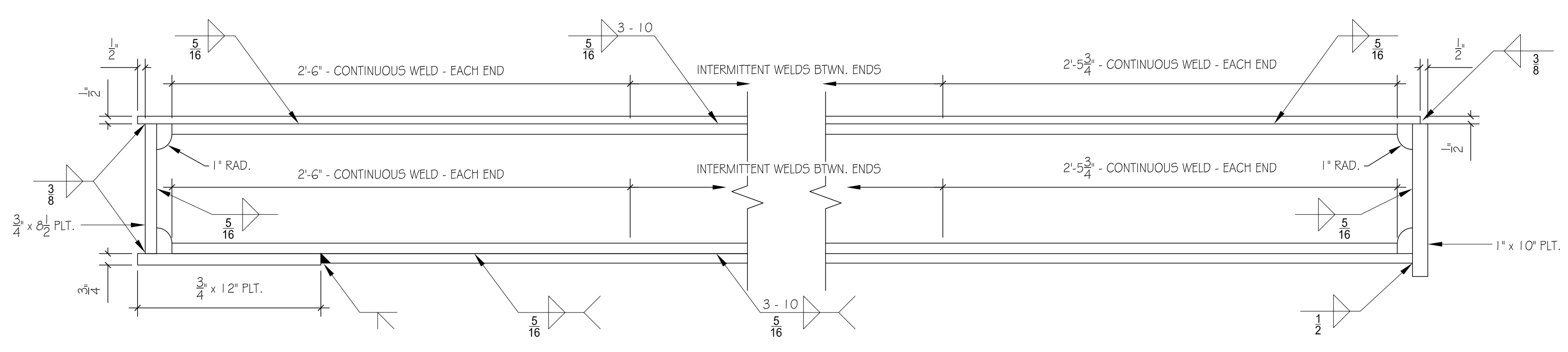
1. STRUCTURAL STEEL DETAILING, FABRICATION AND ERECTION TO BE IN ACCORDANCE WITH THE LATEST EDITION OF THE "MANUAL OF STEEL CONSTRUCTION".
2. STRUCTURAL STEEL SHALL CONFORM TO ASTM A992 GRADE 50, EXCEPT TUBE STEEL WHICH SHALL CONFORM TO ASTM A-500, GRADE B.
3. ANGLES AND PLATES SHALL CONFORM TO ASTM A36.
4. SHOP CONNECTIONS MAY BE BOLTED OR WELDED UNLESS SPECIFICALLY INDICATED.
5. ALL BOLTED CONNECTIONS ARE TO BE MADE USING HIGH STRENGTH BOLTS ASTM A-325 - HDG BOLTS, UNLESS OTHERWISE NOTED. THE DIAMETER OF HOLES FOR BOLTED CONNECTIONS SHALL BE A MAXIMUM OF $\frac{1}{16}$ INCH LARGER THAN THE BOLT DIAMETER ($\frac{1}{8}$ " LARGER FOR H.D.G. ASSEMBLIES). PROVIDE ONE HARDENED WASHER UNDER THE ELEMENT TURNED IN TIGHTENING. PROVIDE PLATE WASHERS IN BOTH OUTER PLIES WHEN OVERSIZE OR SLOTTED HOLES ARE INDICATED.
6. TIGHTEN HIGH STRENGTH BOLTS TO THE SNUG-TIGHT CONDITION IN ACCORDANCE WITH AISC SPECIFICATIONS FOR STRUCTURAL JOINTS USING ASTM A325 OR A490 BOLTS, EXCEPT WHEN SLIP-CRITICAL JOINTS OR CONNECTIONS SUBJECTED TO DIRECT TENSION ARE INDICATED OR SPECIFIED.
7. WELDING PROCEDURES SHALL CONFORM TO AWS D1.1 USING E70XX SERIES ELECTRODES.
8. FIELD WELDING OF STRUCTURAL MEMBERS IS NOT PERMITTED UNLESS SPECIFICALLY INDICATED.
9. ALL BEAMS ARE DESIGNED FOR AN ALLOWABLE LIVE LOAD DEFLECTION = SPAN(in.) / 360.
10. STEEL FABRICATOR SHALL DESIGN END CONNECTIONS BASED ON FULL ALLOWABLE UNIFORM BEAM CAPACITY. MOMENT CONNECTIONS SHALL BE DESIGNED FOR FULL MOMENT CAPACITY OF WEAKEST BEAM USING BOLTED OR WELDED CONNECTIONS.
11. SUBMIT COMPLETE SET OF SHOP DRAWINGS FOR APPROVAL PRIOR TO FABRICATION. SHOP DRAWINGS SHALL GIVE COMPLETE INFORMATION INCLUDING MATERIAL, MEMBER SIZES, ASSEMBLY, ERECTION DETAILS AND WELDING, BOTH SHOP AND FIELD, USING AWS SYMBOLS.
12. ALL TOP OF STEEL ARE CONSTANT BETWEEN GIVEN POINTS.
13. ALL STRUCTURAL STEEL SURFACES SHALL BE FABRICATED AND PREPARED FOR HOT DIPPED GALVANIZING IN ACCORDANCE WITH ASTM A153/A153M, A123/A123M AND A385/A385M, A384/A384M, AND A143/A143M AS APPLICABLE.
14. ALL STRUCTURAL STEEL SHALL BE HOT DIP GALVANIZED UNLESS OTHERWISE NOTED. HOT DIP GALVANIZE AFTER ALL CUTS ARE MADE, HOLES ARE DRILLED AND PLATES ARE WELDED TO STEEL MEMBERS.



SECTION I
Scale: $2'' = 1'-0''$



SECTION 2 - SPLICE DETAIL
Scale: $2'' = 1'-0''$



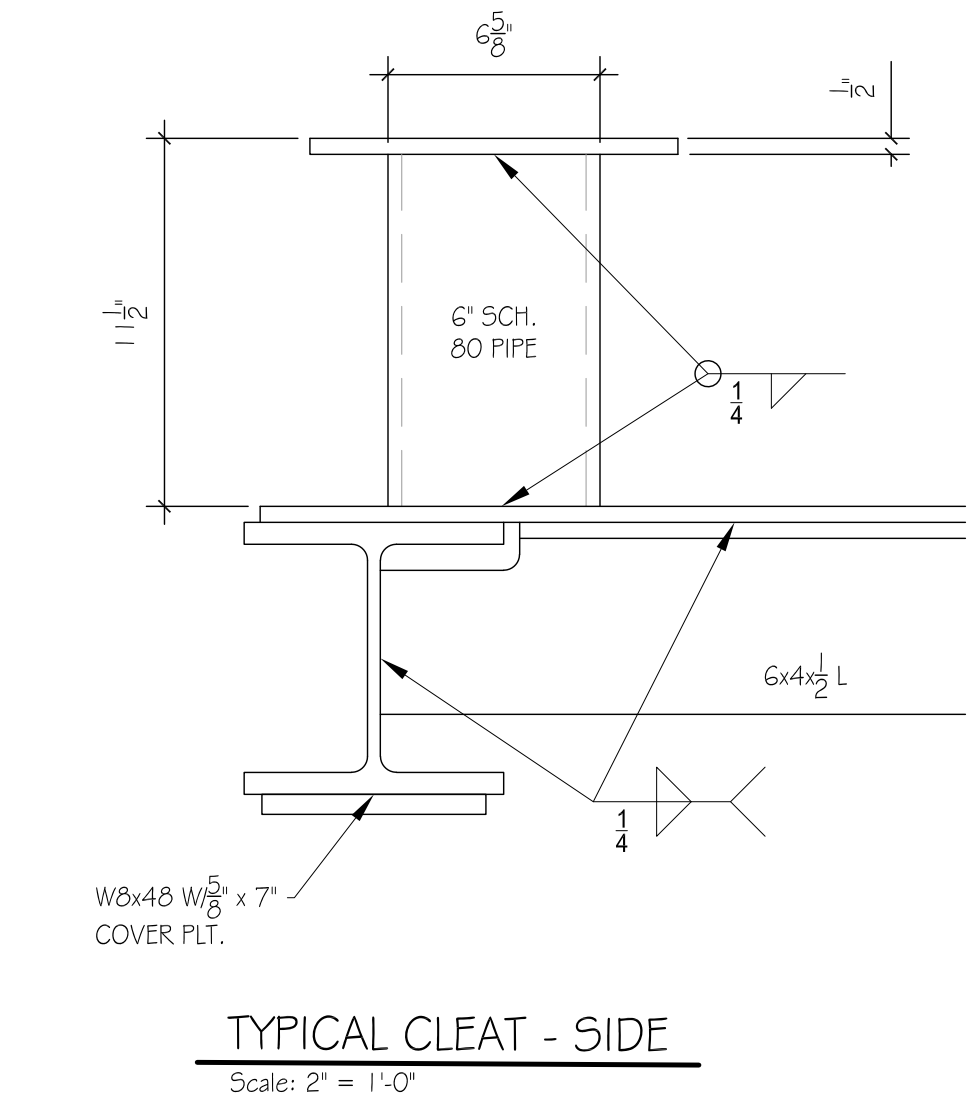
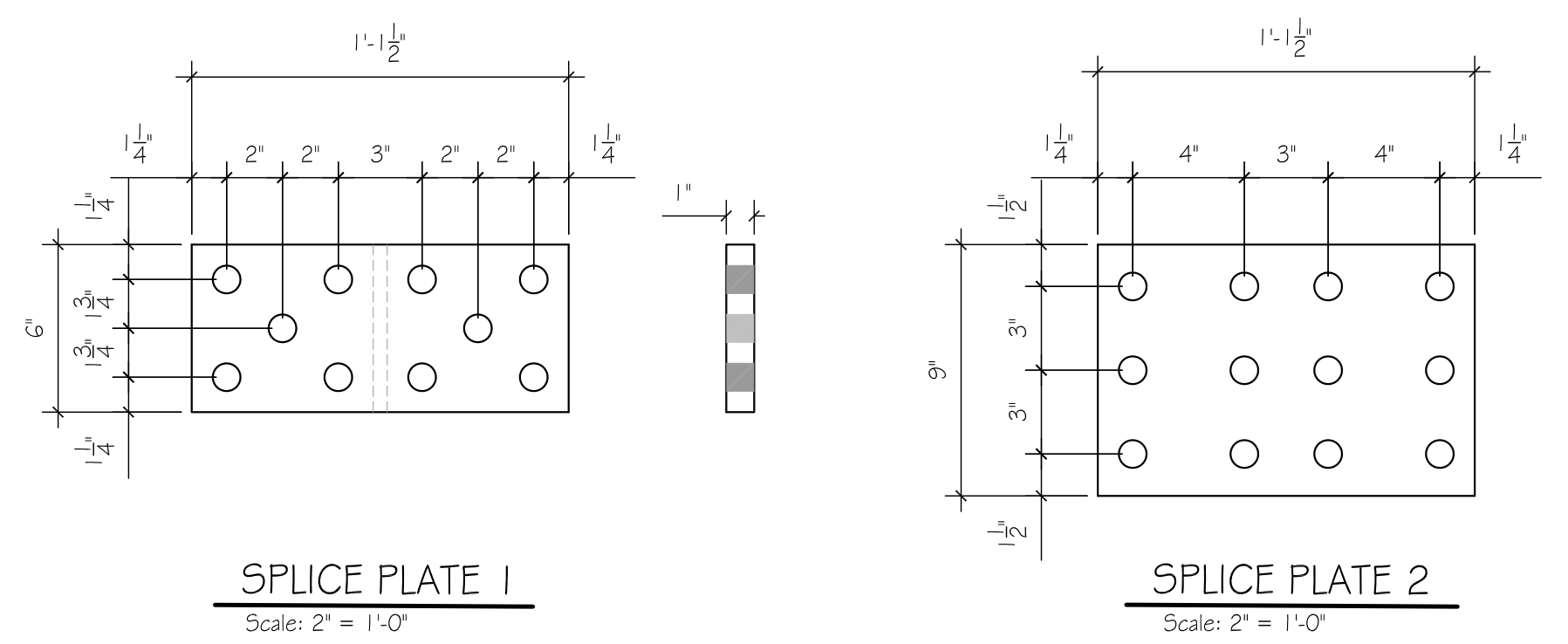
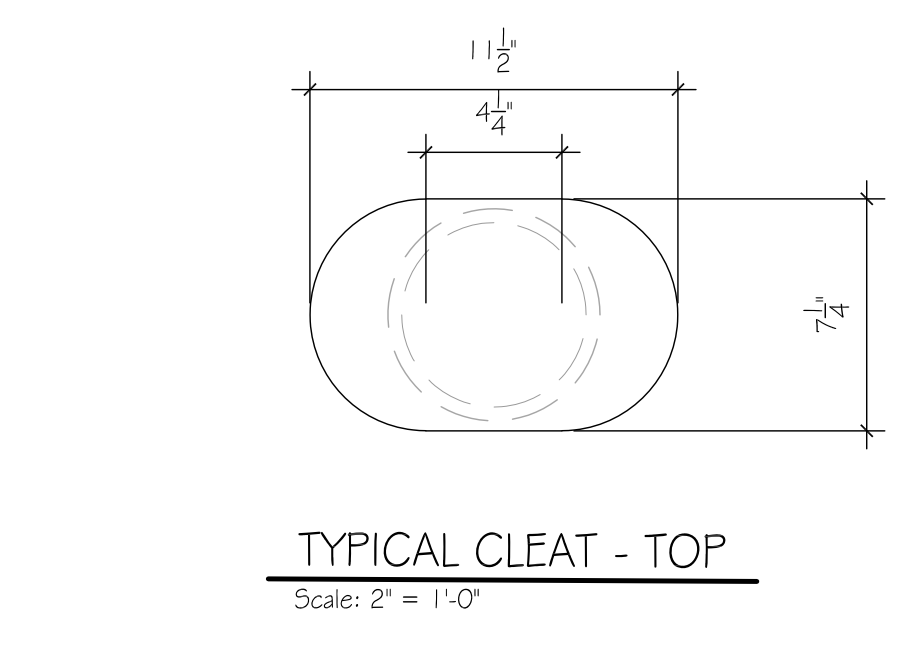
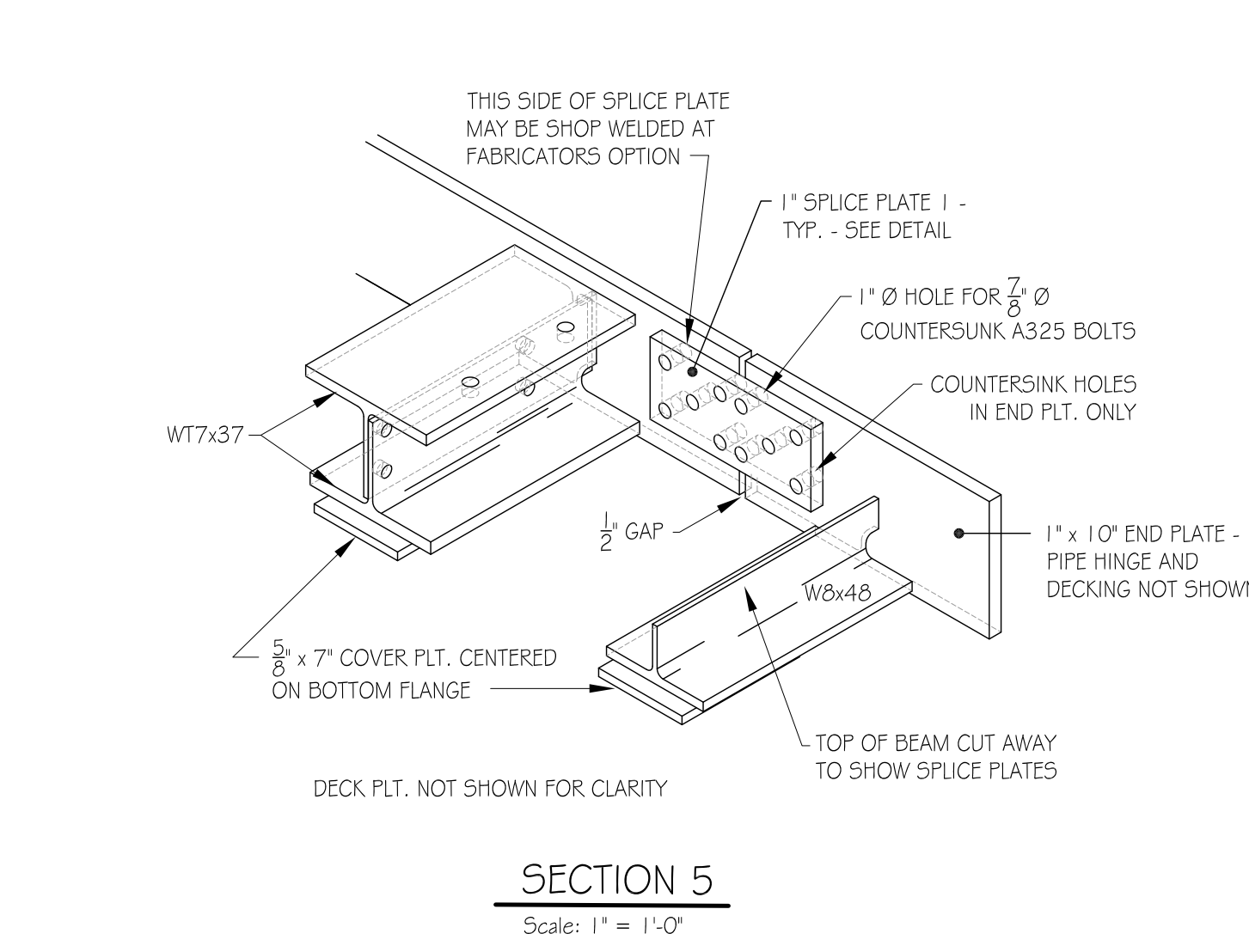
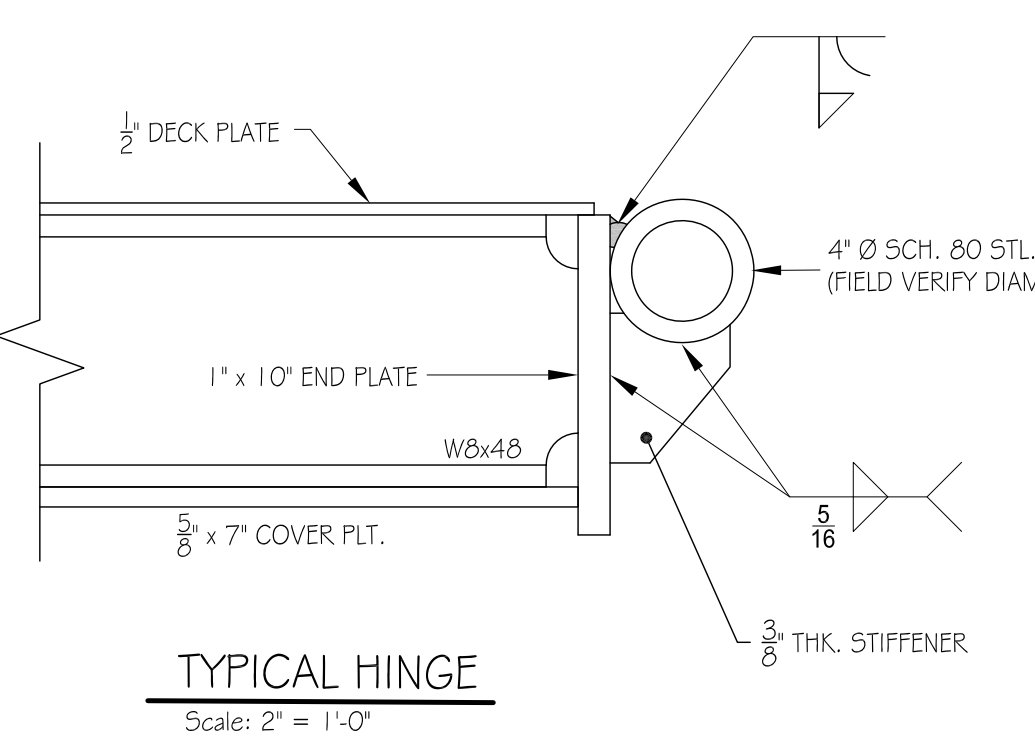
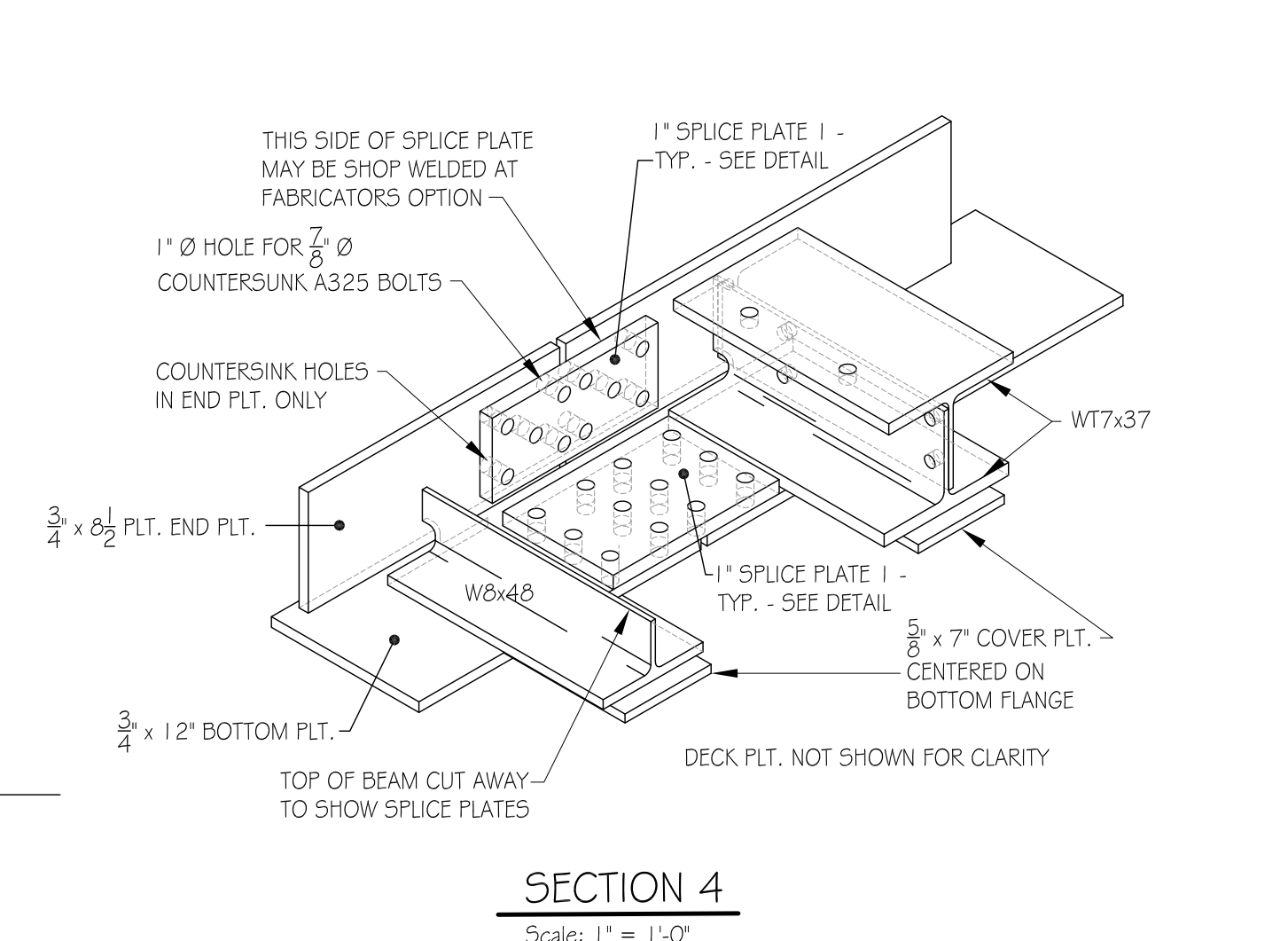
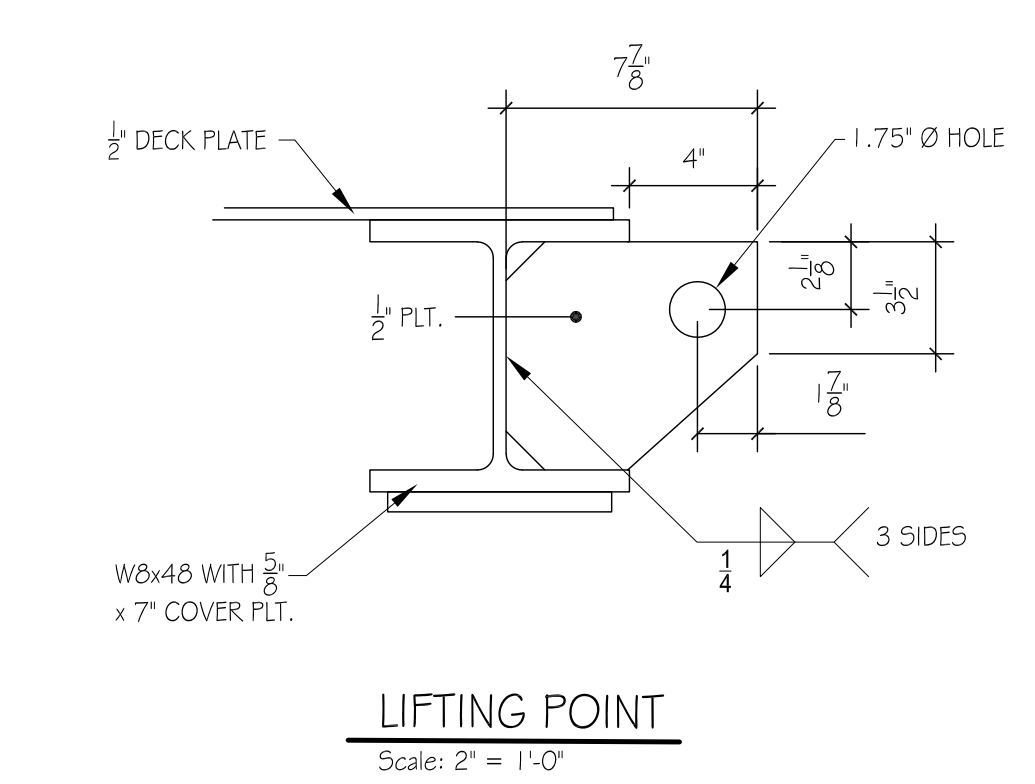
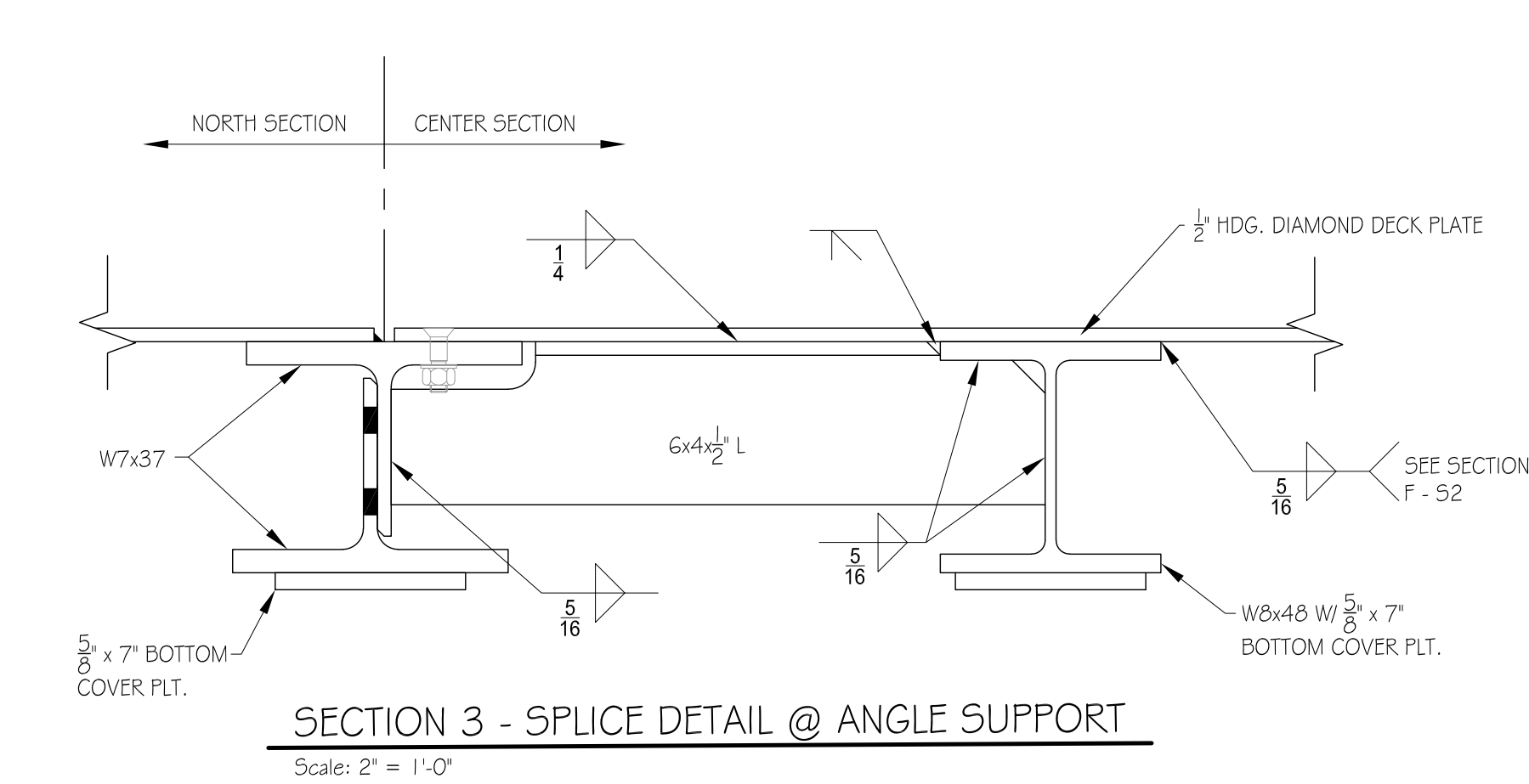
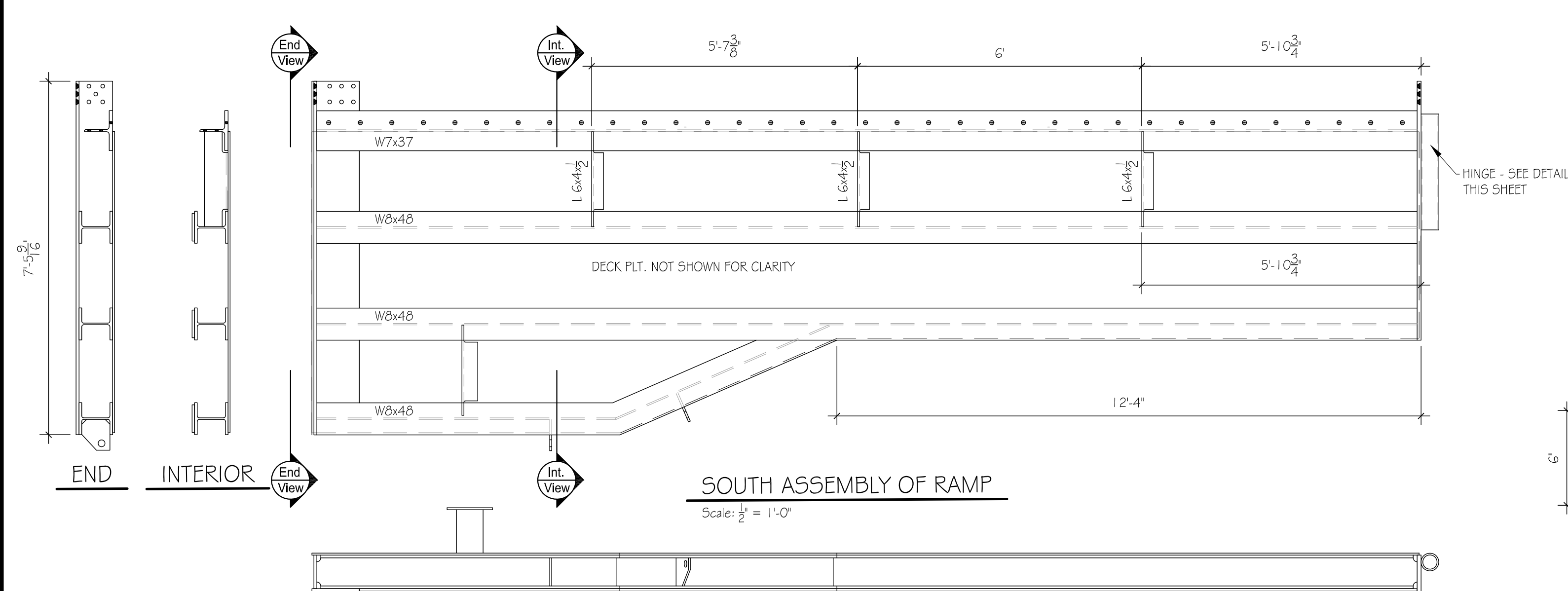
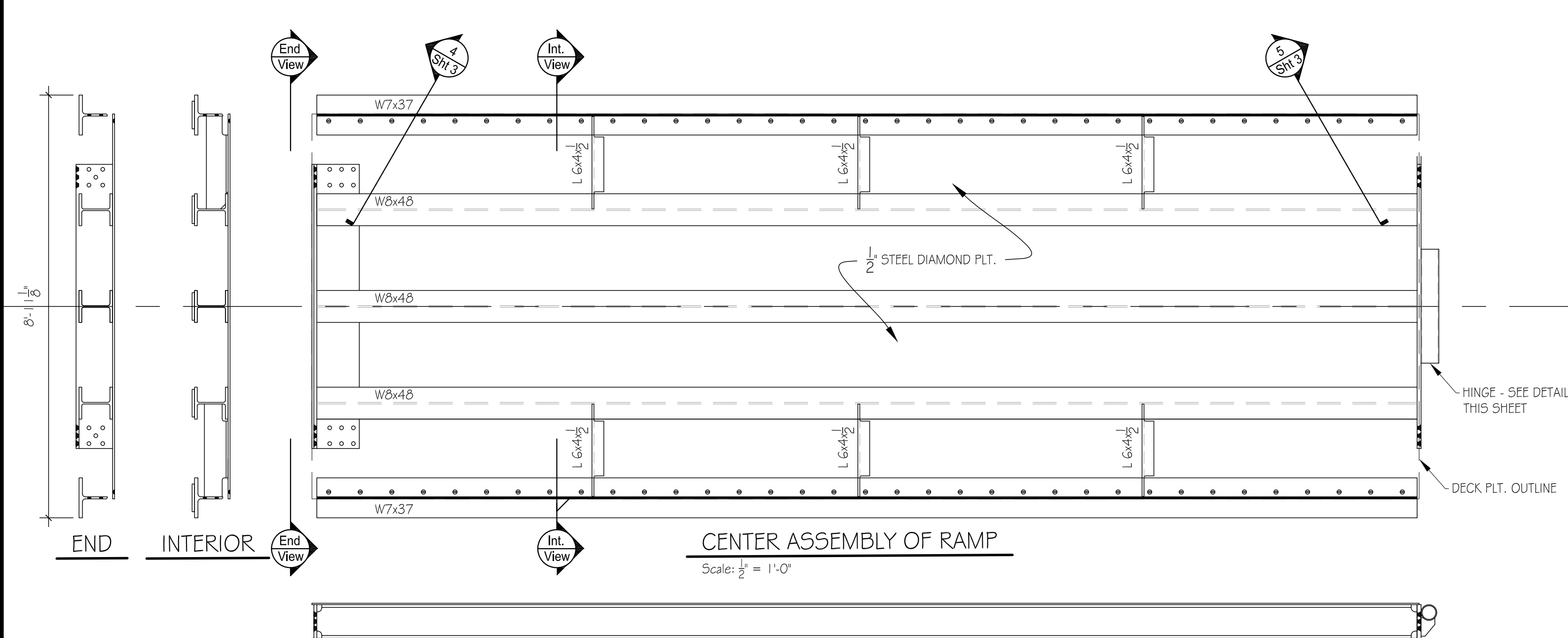
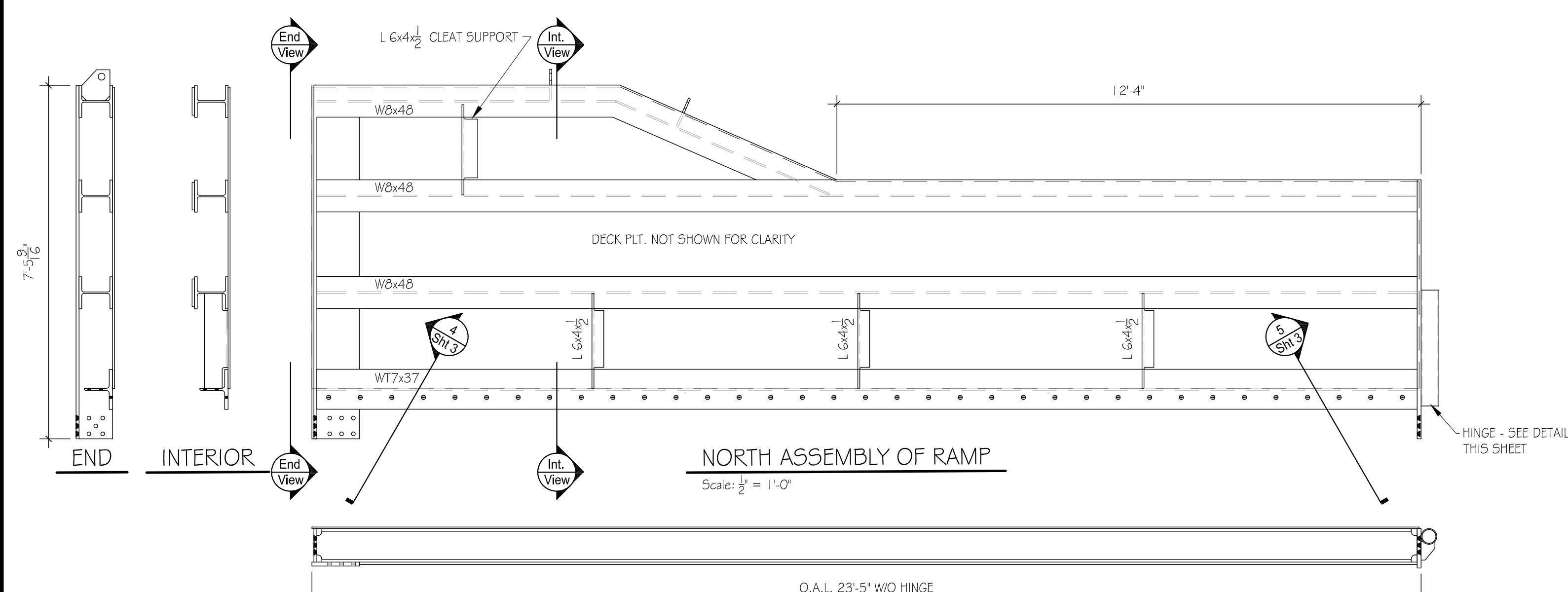
SECTION F - TYPICAL WELDING DETAILS
Scale: $2'' = 1'-0''$

ST. JEAN ENGINEERING, LLC
Structural, Marine & Civil Consulting Engineering
209 Arnolds Neck Drive
Warwick, RI 02886
Phone/Fax: 401.398.0999
st.jean.engineering@verizon.net

Drawn: R. ST. JEAN
Checked: [Signature]
Scale: $\frac{1}{2}'' = 1'-0''$ (OWN)
DATE: 5/9/23

The Block Island Ferry
Interstate Navigation Company
316 Great Island Rd.,
Narragansett, RI 02882
LOADING RAMP REPLACEMENT

DWG. NO.
S1
SHT. 1 OF 2



RICHARD N. ST. JEAN
No. 4997
Professional Engineer

ST. JEAN ENGINEERING, LLC
Structural, Marine & Civil Consulting Engineering
209 Arnolds Neck Drive
Warwick, RI 02886
Phone/Fax: 401-398-0999
st.jean.engineering@verizon.net

Drawn: R. ST. JEAN
Checked: R. ST. JEAN
Scale: 1/2" = 1'-0" (LOD)
DATE: 5/8/23

The Block Island Ferry
Interstate Navigation Company
316 Great Island Rd., Narragansett, RI 02882
LOADING RAMP REPLACEMENT

DWG. NO.
S2
SHT. 2 OF 2